

THE HARMONY
OF SIMPLICITY
FOR YOUR **IT SOLUTIONS**



Release 01 EN





ABACUS PURE THE CONCEPT



Since 1978 **ETA SPA** is designing and manufacturing High-quality Enclosure solutions for Industrial Automation, Harsh Environments, LV Energy Distribution and Information Technology.

Staff + 200 employees
Turnover 35 millions
70.000 sqm
4 manufacturing units in Italy
1 logistic center in Italy
1 R&D Center ETA Next in Italy
1 manufacturing unit in Romania
3 sales branches in Europe
(UK, France, Poland)
1 representative office in Russia
40 Countries worldwide
90% products intended for foreign end markets
40 years of business activity.

ABACUS PURE is a project of ETA Next - the ETA Research Center able to create, design and built - born to propose new product solutions dedicated to our Business Partners.

ABACUS PURE is the result of our creative ideas: analysis of customer's need, prototyping, evaluation of components, choice of the most efficient and effective solution.

ABACUS PURE is born from the need of the market to be able to take advantage of an essential & functional product, aesthetically harmonious with the final installation environment.

ABACUS PURE is an ETA product solution, Created with Passion.





CREATED WITH PASSION

The dedicated range of cabinets, enclosures and accessories for Information Technology: data center, server, cabling applications, safety and video surveillance.

ABACUS SYSTEM



 Server solutions with IP20 protection rating
ESSE

 Functional entry-level solutions aesthetically harmonious with the final installation environment
PURE



 Cabling solutions with IP20 protection rating
ESSE

 Suite cabinets IP55 Solutions for harsh applications
PRO



CHOOSE YOUR SOLUTION



ABACUS PURE ASSEMBLED CABINET

TECHNICAL FEATURES

- Construction with 4 uprights and 8 crossbars made of 1.5 mm thick DC01 steel plate with 8 joining blocks. It can be completely dismantled.
- Removable roof ready for ventilation and wiring.
- Side walls and back panel made of 1 mm thick DC01 steel plate, each with No. 2 quick-locking ¼ turn closure and keylock.
- Pre-punched bottom plate made of 1 mm thick DC01 steel plate.
- No. 4 19" rack uprights made of 1.5 mm thick HSLA260 steel plate with high yield point.
- 4 crossbars for 19" uprights made of 2.3 mm thick Sendzimir steel plate.
- No. 1 glazed door, consisting of No. 2 side strips made of 1.35 mm thick DC01 steel plate and No. 1 4 mm thick hardened glass panel equipped with rotating handle with keylock and No. 3 hinges. [*Available as option, door with front and rear ventilation slots, only for D=1000mm].
- No. 4 leveling feet.



ETA-patented orthogonal joint and easy assembly of the structure with 8 screws only



Structure manufactured from HSLA material

PAINTING CYCLE

- E DUP - Cathodic electrophoretic paint with epoxy resin and finishing with heat-curing epoxy polyester powder paint. ETA standard electrostatic cycle.
- Standard color: RAL9011 black with orange-peel finish.
- More RAL colors available upon request.

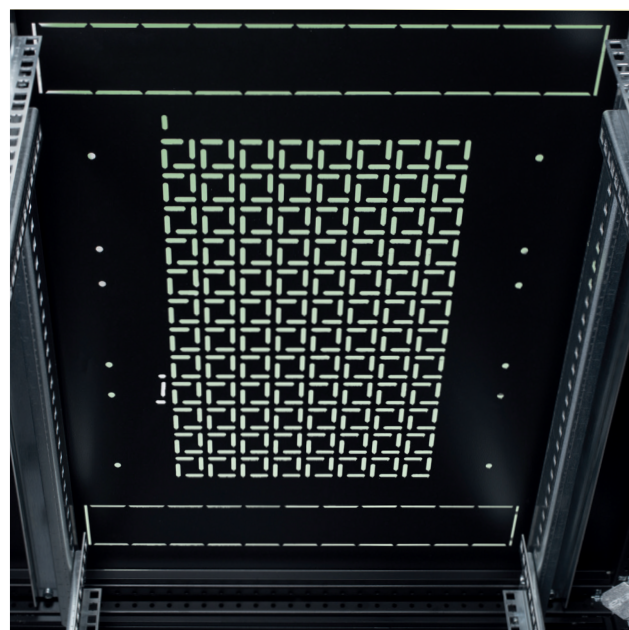


RACK STATIC LOAD CAPACITY: 700kg

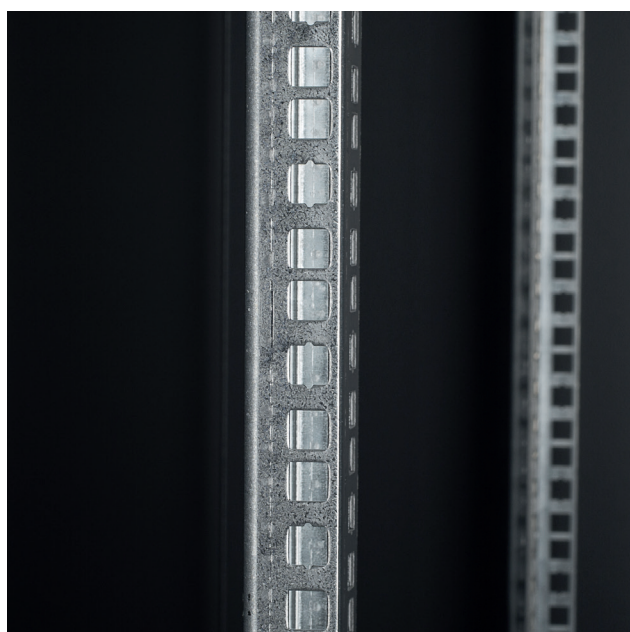
ABACUS PURE ASSEMBLED CABINET					
DIMENSIONS				PRODUCT CODE	
HE	WIDTH	HEIGHT	DEPTH	WITH FRONT GLAZED DOOR AND REAR PANEL	WITH AIR-VENTILATED FRONT DOOR AND AIR-VENTILATED BACK DOOR
25	600	1200	600	A250606	-
33	600	1600	600	A330606	-
42	600	2000	600	A420606	-
42	600	2000	1000	A420610	A420610.A
42	800	2000	800	A420808	-
42	800	2000	1000	A420810	A420810.A

Key

A	42	06	10	.A	Code
A					Identification letter for ABACUS PURE
	42				no. of HE
		06			width
			10		depth
				.A	optional versions



Pre-punched roof for ventilation and cable entry



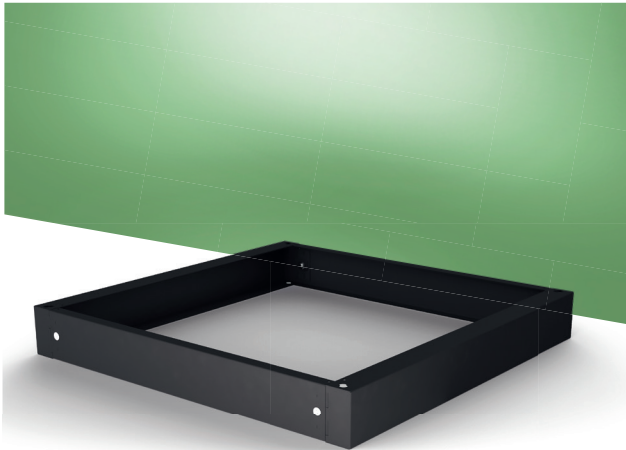
Sturdy rack upright



Pre-punched bottom for cable entry



PLINTH WITH INTEGRATED CORNER PIECES ABACUS PURE DIMENSIONS MM



Plinth with integrated corner pieces and side cross-pieces



Levelling feet

PLINTH ABACUS PURE

TECHNICAL FEATURES

Plinth H=100mm consisting of front crossbars (No. 2 pieces) and side crossbars with integrated corner pieces (package incl. No. 2 pieces).

PAINTING CYCLE

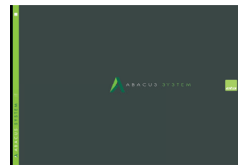
- E DUP - Cathodic electrophoretic paint with epoxy resin and finishing with heat-curing epoxy polyester powder paint. ETA standard electrostatic cycle.
- Standard color: RAL9011 black with orange-peel finish.
- More RAL colors available upon request.



ABACUS PURE PLINTH WITH INTEGRATED CORNER PIECES		
FOR CABINET MM	PRODUCT CODE	
	FRONT CROSSBARS	SIDE CROSSBARS WITH INTEGRATED CORNER PIECES
600	AEZE-T0600F	AEZE-T0600L
800	AEZE-T0800F	AEZE-T0800L
1000	-	AEZE-T1000L



PLEASE REFER TO ABACUS SYSTEM GENERAL CATALOGUE



TO FIND ALL THE ACCESSORIES FOR:



VENTILATION



SHELVES FOR INTERNAL FITTING



PDU



PLUS

Configuring your IT cabinet has never been so easy!

6 Dimensions

2 Versions for L=1000 mm

Order in batches, based on your stock requirements

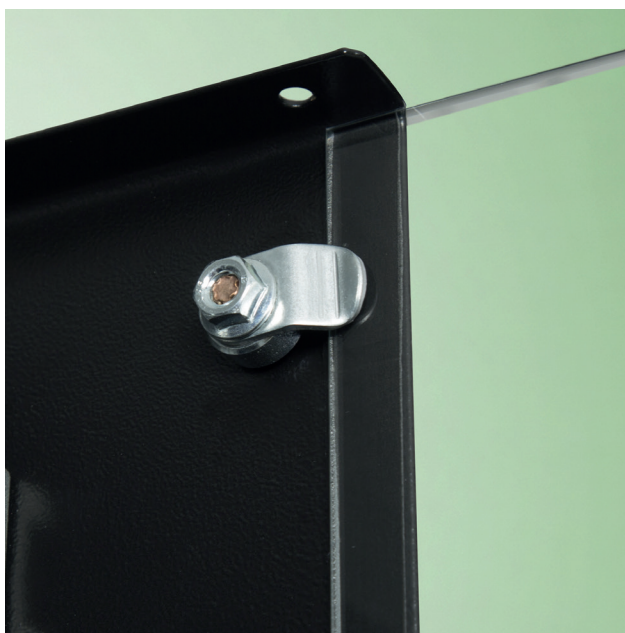
Flat-pack version coming soon.



If you need special finishing or specific projects... do not hesitate to contact ETA NEXT for consulting support!



Easy-to-disassemble door unscrewing the hinge



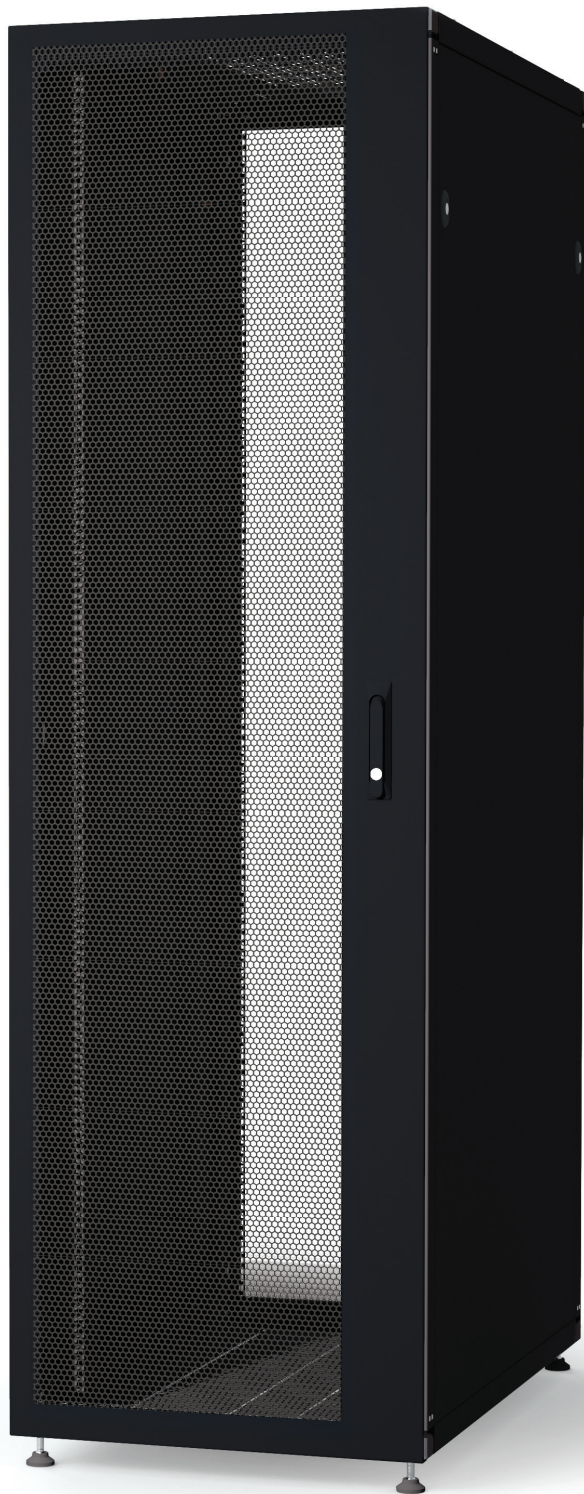
Glazed door with high-resistance double-sided adhesive tape and additional fixing points



Side panels and rear panel assembled with quick-locking 1/4 turn closure and keylock



Rotating handle with keylock



FOR YOUR IT SOLUTIONS
OF SIMPLICITY
THE HARMONY



PURE

Release 01 EN

E.T.A. S.P.A.
22035 Canzo - Como (Italy)
Via Monte Barzaghino, 6
t. +39 031.673.611
f. +39 031.670.525
infosede@eta.it
www.eta.it

E.T.A. ENCLOSURES (UK) LIMITED
Unit 2, Ignite, Magna Way
Rotherham, South Yorkshire, S60 1FD
t. +44 01709 386630
f. +44 01709 369524
info@eta-enclosures.co.uk
www.eta-enclosures.co.uk

SASU E.T.A. France
Rue du Pré aux Boeufs
76806 St Etienne du Rouvray
t. +33 02 35643470
f. +33 02 35642275
info@etafrance.fr
www.etafrance.fr

ETA ENCLOSURES Sp. z o.o.
Sikorskiego 44,
62-300 Września (Polonia)
biuro@eta-enclosures.it
www.eta-enclosures.it

E.T.A. SPB
Shpalernaya ul. 54
191015 St.Petersburg (Russia)
www.eta.it